



# SP-Arte 2023



Almeida & Dale

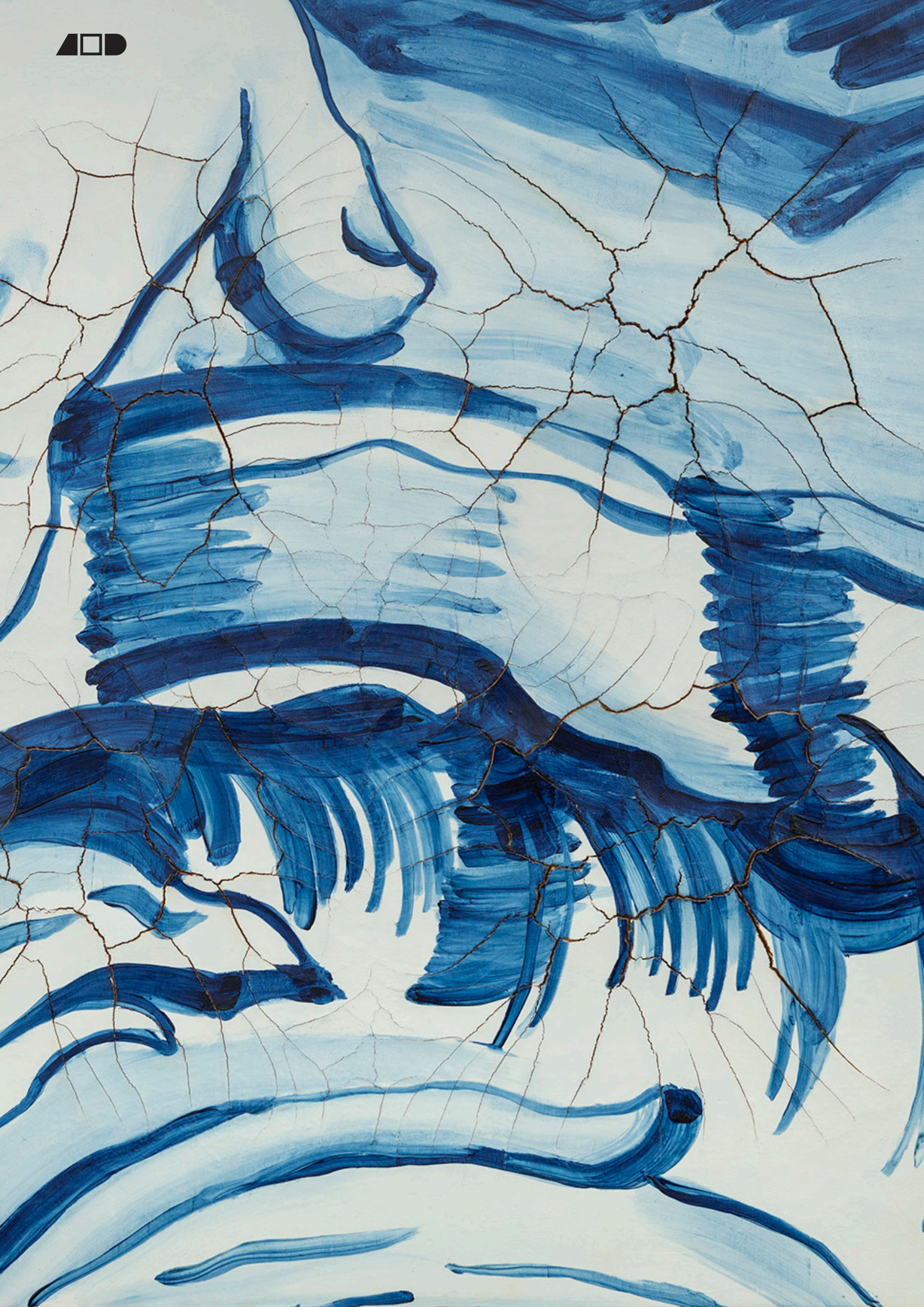
For SP-Arte 2023, Almeida & Dale Galeria de Arte presents a selection of works by Brazilian and international artists who worked, for the most part, in the post-war period. The focus is on trends that guided the time's artistic debate, namely the various strands of abstractionism (informal, expressionist, geometric, constructivist), Pop art, Latin American conceptualism and objectual art.

In the works of Alfredo Volpi, Eleonore Koch and Rubem Valentim, the permeability that defines the way these artists deal with the trends in vogue in their contexts stands out, as canvases oscillate between geometric and figurative abstractionism. Although in all three cases the presence of a constructivist orientation is clear, Volpi's work displays an earthy color, partly through the use of tempera, and the artist also does not entirely abandon the symbolism of his figurative forms. A set of works by Luiz Sacilotto, Maria Leontina, Raymundo Colares and Helio Oiticica further demonstrates the variety of approaches to geometric abstraction that emerged in Brazilian art in the middle of the last century.

The Pop visuality and the intersections between erudite and popular cultures, common themes among artists from the end of the 20th century, are represented in this selection through the works of Leonilson and Victor Arruda, which share space with sculptures and paintings by Sidney Amaral, Adriana Varejão, Heitor dos Prazeres and José Antonio da Silva. This set demonstrates the plurality of experiences, both individual and collective, related to issues such as colonialism, the fragmentation of the subject, sexuality and the various intersections between art and popular culture.

Almeida & Dale also includes a special selection of works by celebrated international artists including Joan Miró, Alexander Calder and Max Bill, as well as a large canvas by painter Sam Francis.









**Adriana Varejão**

*Adriático [Adriatic], 2008*

oil and plaster on canvas

110 x 110 cm each [43 1/4 x 43 1/4 in each]

(13314)





**Victor Brecheret**

*Diana Caçadora [Diana the Huntress], n.d.*

marble

58,5 x 79 x 28,5 cm [23 x 31 1/8 x 11 1/4 in]

(11361)





**Flávio de Carvalho**  
*Paisagem Estival [Summer Landscape]*, 1964  
oil on Canvas  
54 x 65 cm [21 1/4 x 25 5/8 in]  
(1474)



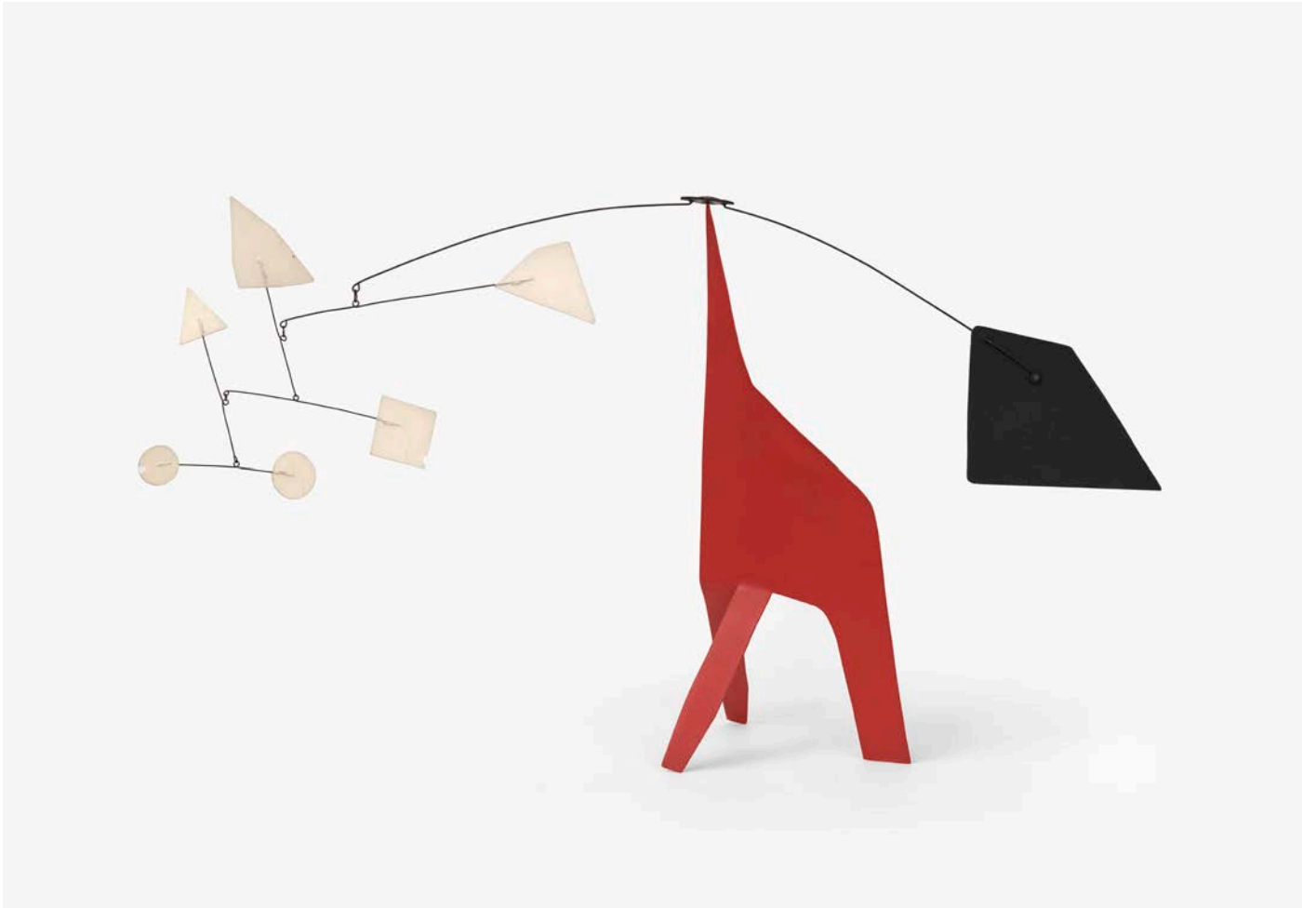






**Flávio de Carvalho**  
*Casal [Couple]*, 1932  
 oil on canvas  
 59 x 55 cm [23 1/4 x 21 5/8 in]  
 (4031)





**Alexander Calder**  
*Red Pachyderm*, 1970  
 polychrome metal  
 67,3 x 127 x 30,5 cm [26 1/2 x 50 x 12 in]  
 (9982)









**José Leonilson**  
*Untitled*, c. 1991  
acrylic on canvas  
66 x 49 cm [26 x 19 1/4 in]  
(1995)





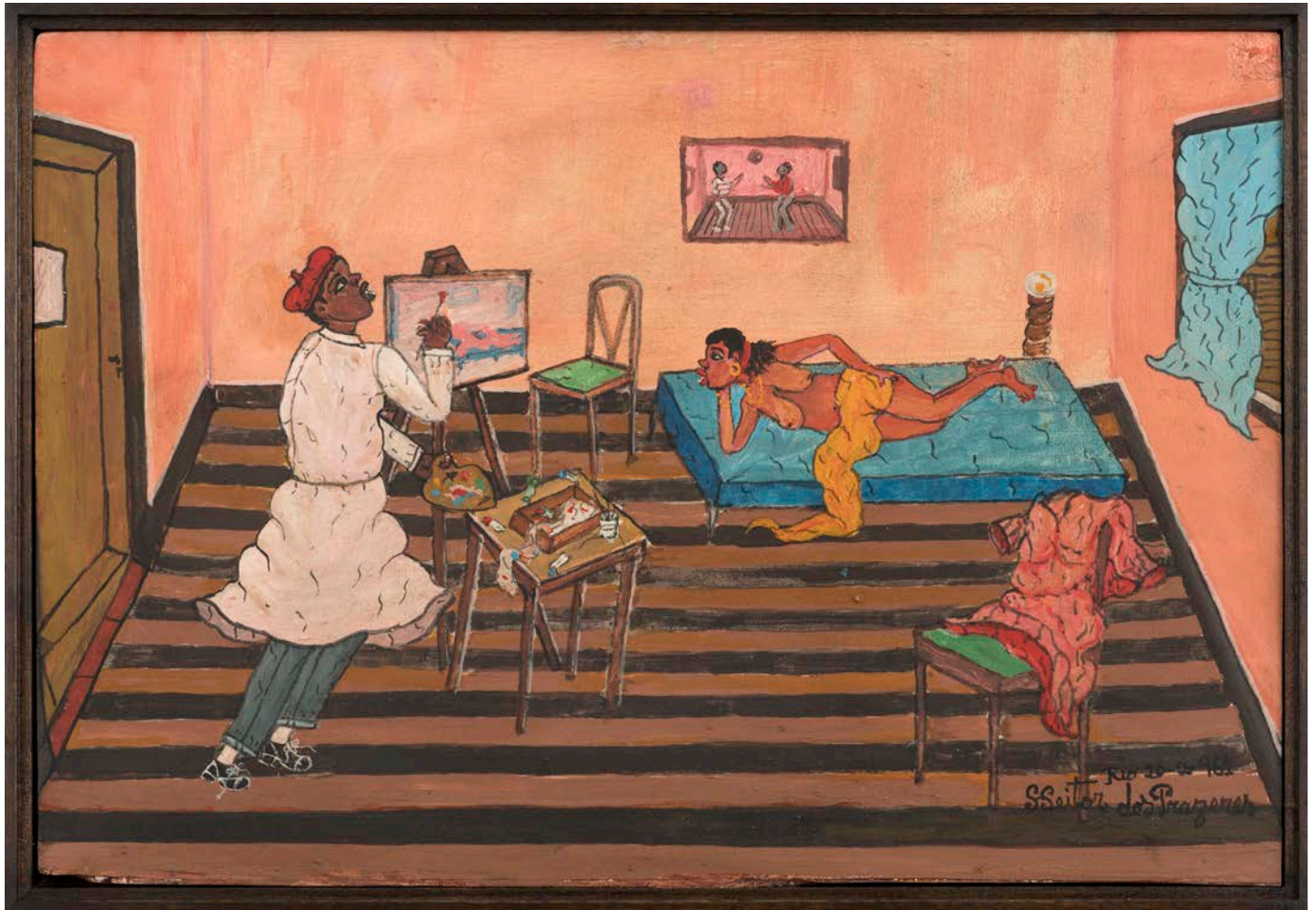
**Maria Leontina**  
*Composição [Composition]*, 1959  
oil on canvas  
81 x 53 cm [31 7/8 x 20 7/8 in]  
(12072)





**Sidney Amaral**  
*Longe de mim, fora de si e longe daqui [Away from Me, out of My Mind and Away from Here],*  
2014/2015  
Bronze and electrostatic painting  
36,5 x Ø 28 cm [height 14 1/8 in]  
(10739)





**Heitor dos Prazeres**

*Untitled*, 1961

oil on wood chipboard

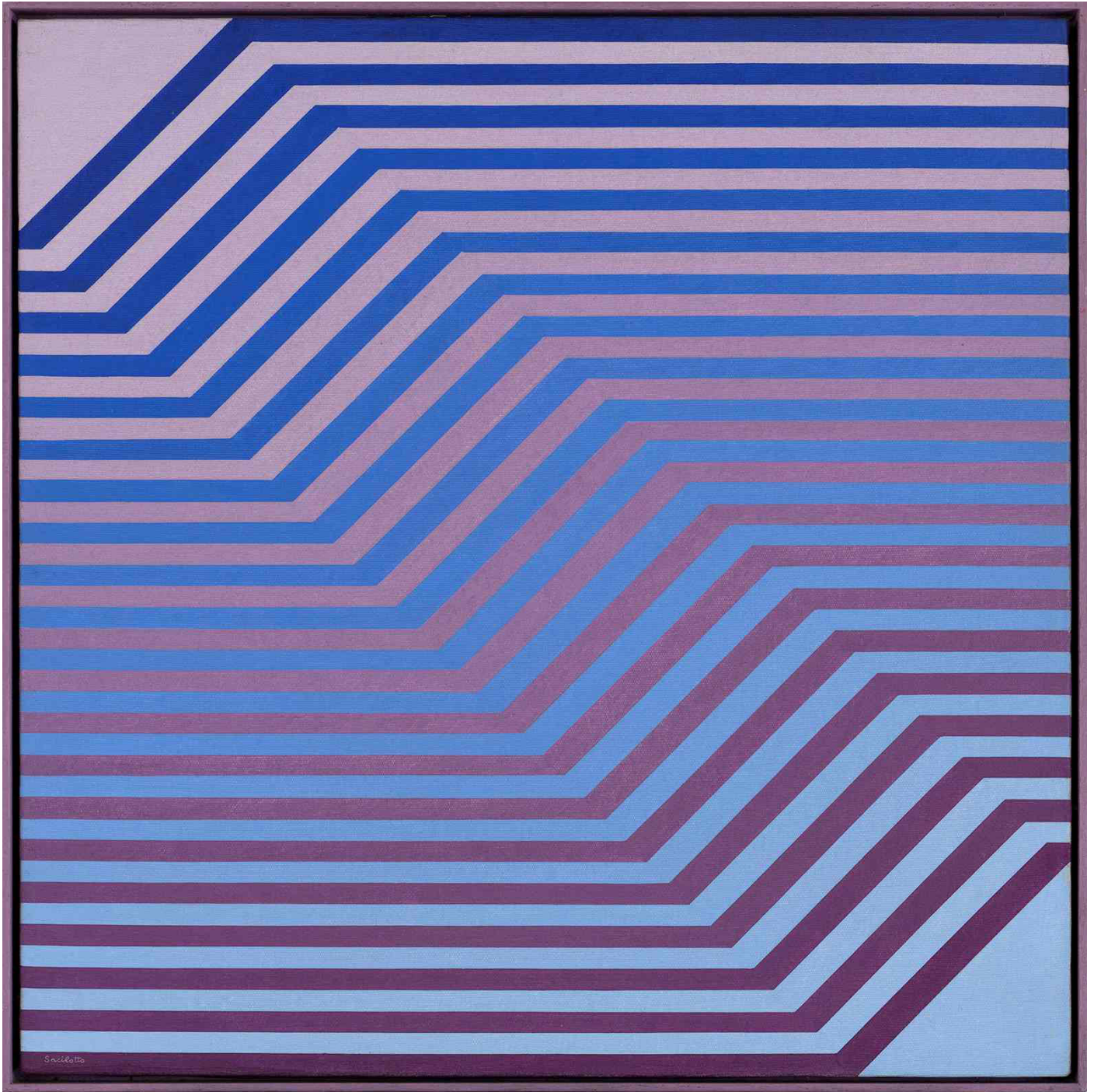
31 x 46 cm [12 1/4 x 18 1/8 in]

(9400)









**Luiz Sacilotto**

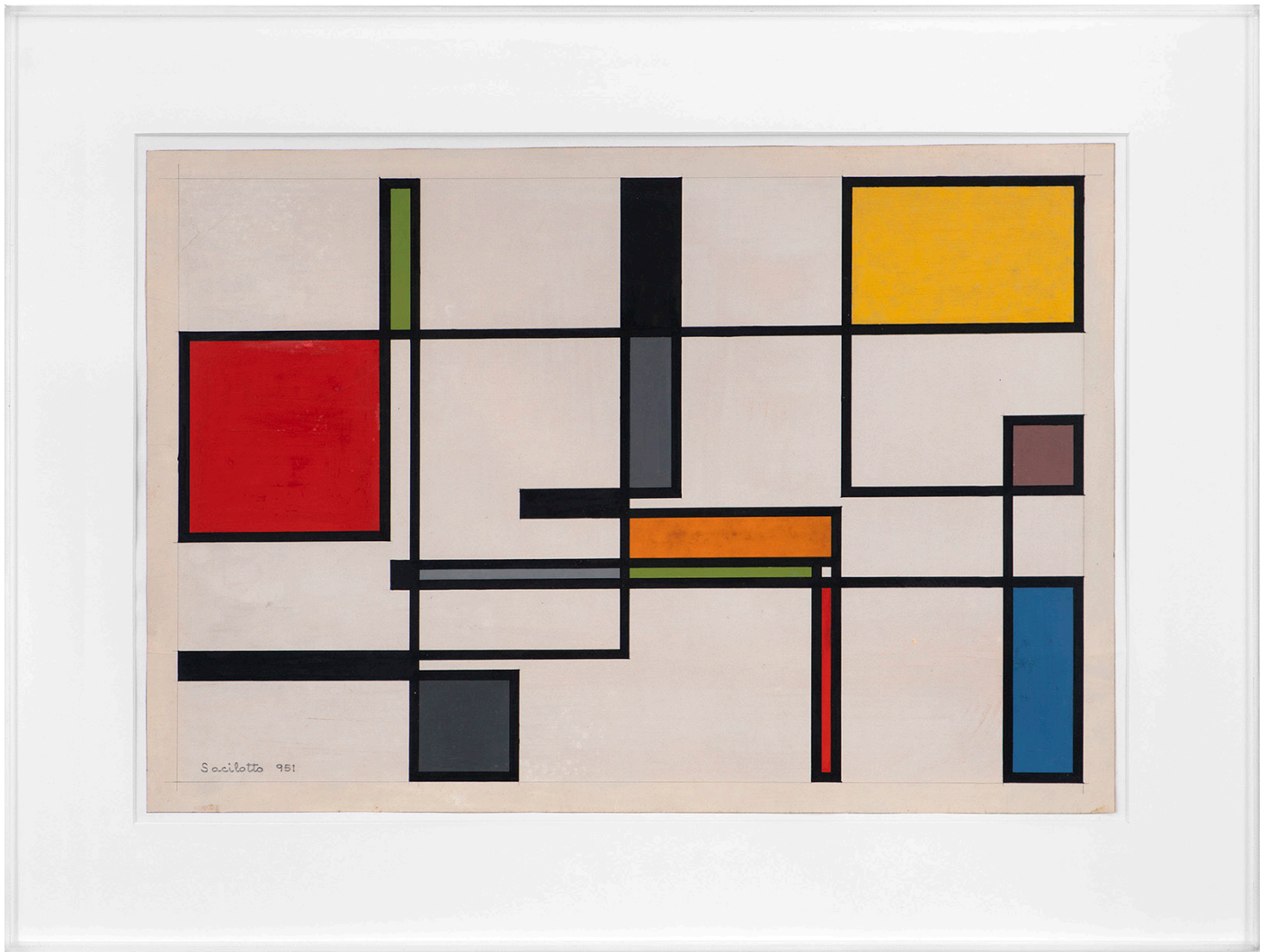
C 8585, 1985

vinyl tempera on canvas

50 x 50 cm [19 3/4 x 19 3/4 in]

(6410)





**Luiz Sacilotto**  
*Painting IV*, 1951  
enamel and graphite on paper  
33 x 48 cm [19 3/4 x 19 3/4 in]  
(6397)



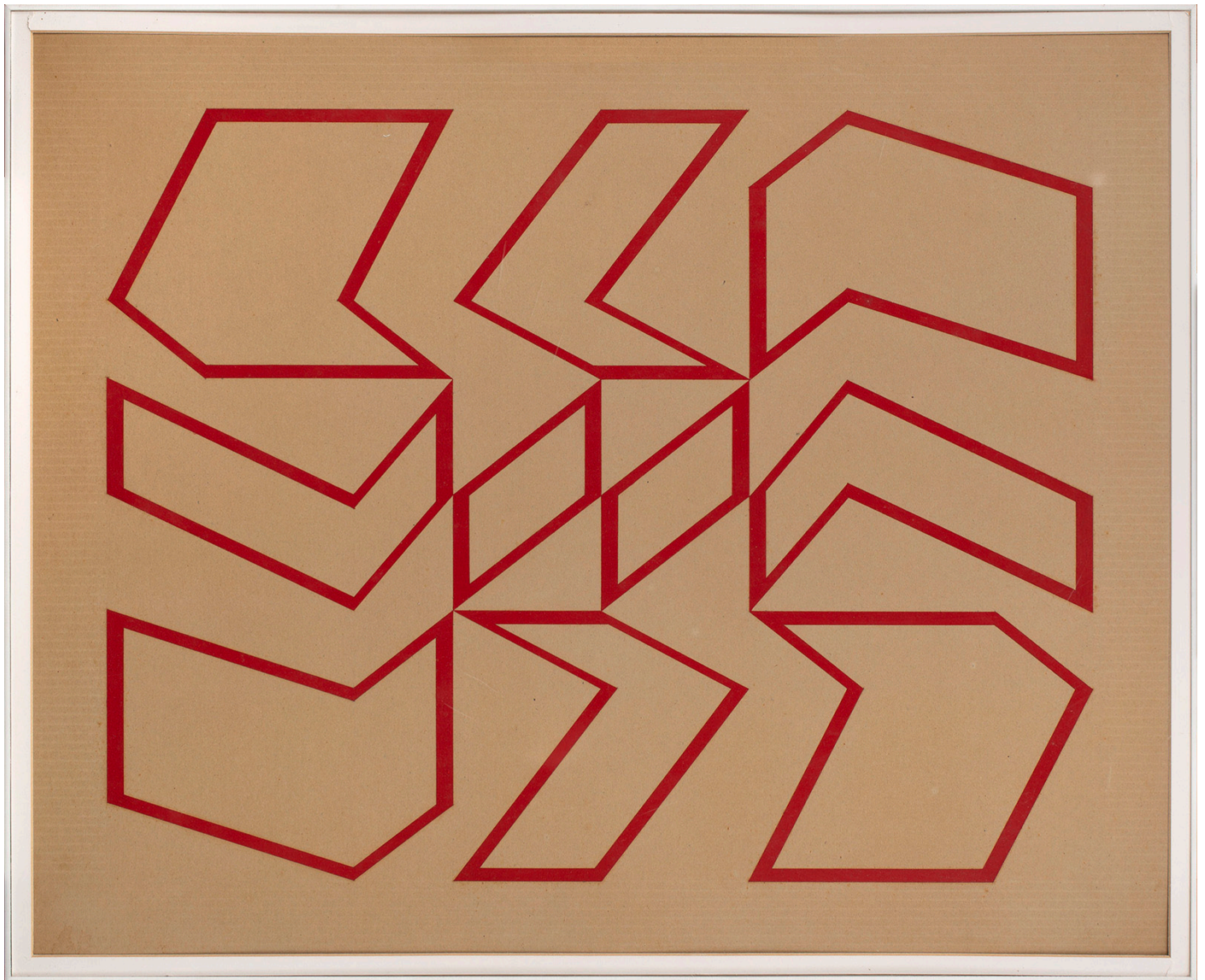


**Luiz Sacilotto**  
C 5730, 1957  
polychrome iron  
52 x 50 x 34 cm [20 1/2 x 19 3/4 x 13 3/8 in]  
(6311)





**Max Bill**  
*Fläche um Raum mit zwei ecken [An Area in a Space with Two Corners], 1971*  
metal  
125 x 56 x 23 cm [49 1/4 x 22 x 9 in]  
(11655)



**Hélio Oiticica**  
*Metaesquema [Metaschema]*, 1958  
gouache on cardboard  
52 x 64 cm [20 1/2 x 25 1/4 in]  
(2196)





**Amilcar de Castro**

*Untitled, 1980's*

Iron

120 x 120 x 78 cm [47 1/4 x 47 1/4 x 30 3/4 in]

(11962)



**Lygia Pape**  
*Untitled*, 1954/1956  
tempera on wood  
40 x 40 x 3 cm [15 3/4 x 15 3/4 x 1 1/8 in]





**Sergio Camargo**

*Untitled, n.d.*

carrara marble

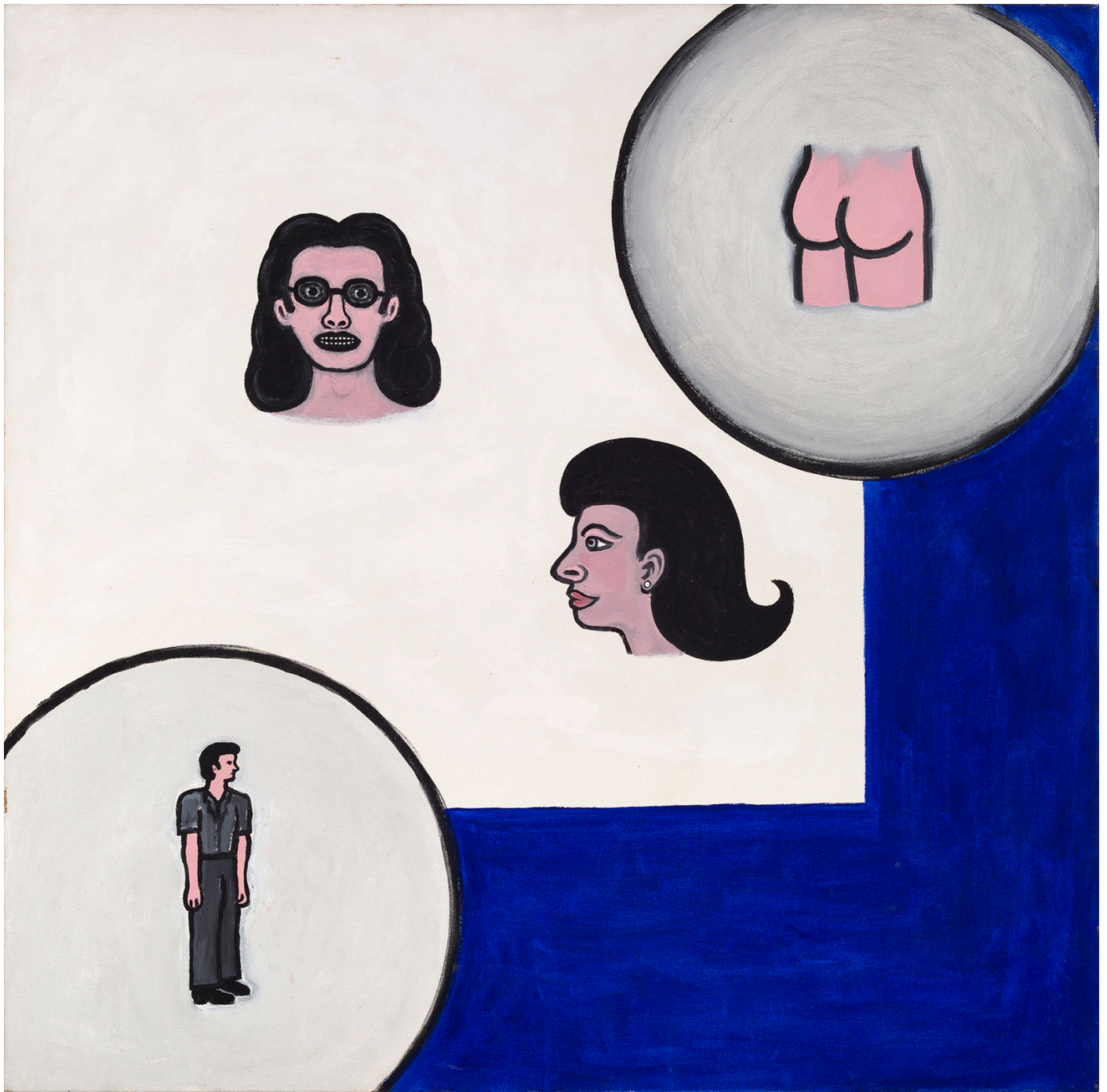
166,5 x 60 x 60 cm [65 3/8 x 23 5/8 x 23 5/8 in]

(11074)



**Sam Francis**  
*Blue Jade*, 1982  
acrylic on canvas  
121,9 x 365,8 cm [48 x 144 in]  
(13356)





**Victor Arruda**  
*Untitled*, 1994  
acrylic on canvas  
100 x 100 cm [39 3/8 x 39 3/8 in]  
(4696)



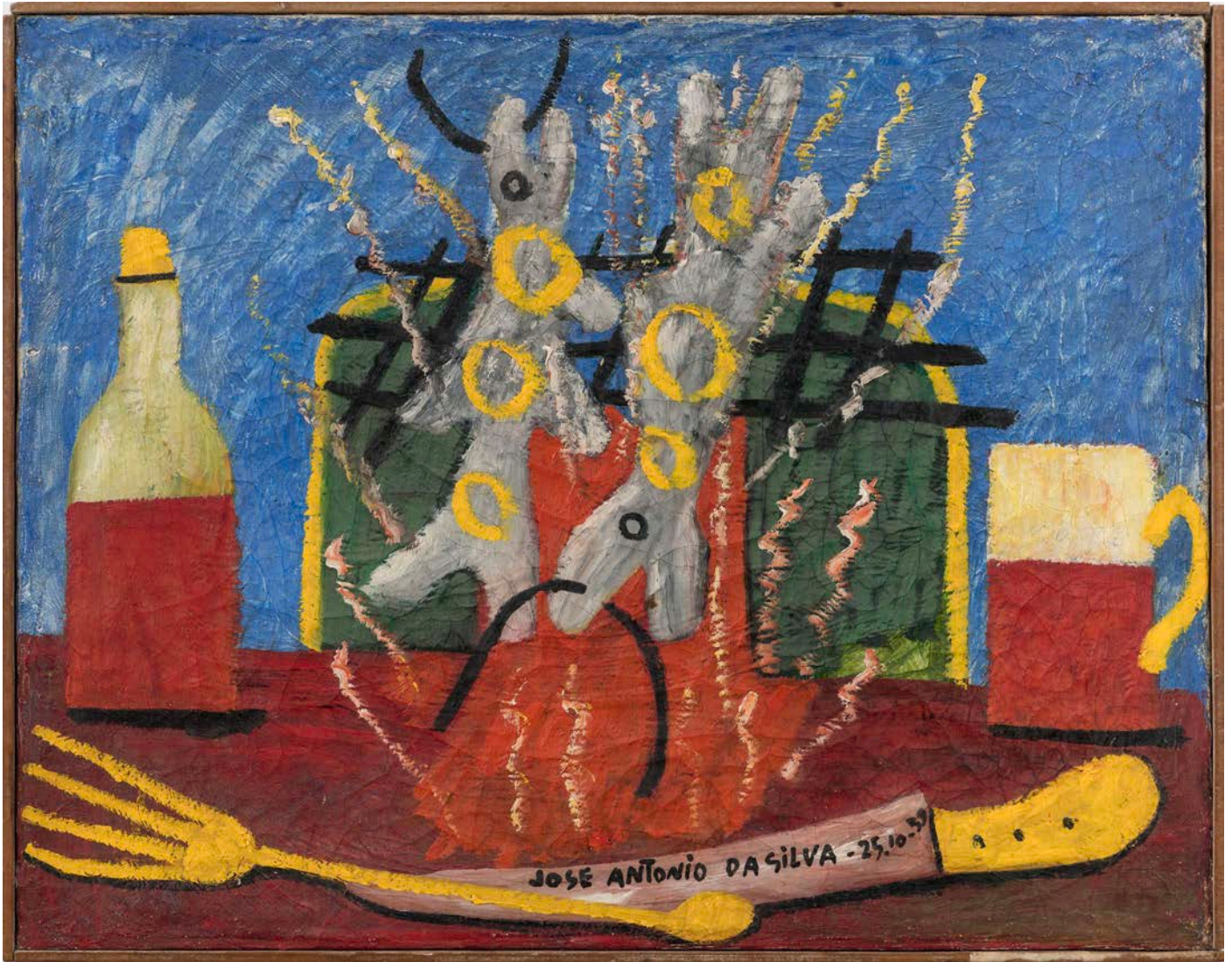
**Rubem Valentim**  
*Objeto místico [Mystical Object], 1972*  
polychrome wood  
26 x 21 x 7 cm [10 1/4 x 8 1/4 x 2 3/4 in]  
(0471)





**Rubem Valentim**  
*Emblem 32*, 1973  
acrylic on canvas  
50 x 35,5 cm [19 3/4 x 14 in]  
(12572)





**José Antônio da Silva**

*Untitled*, 1959

oil on canvas

35,5 x 45 cm [14 x 17 3/4 in]

(12784)





**Eleonore Koch**  
*Untitled, 1965*  
 tempera on canvas  
 69 x 48 cm [27 1/8 x 18 7/8 in]  
 (9739)

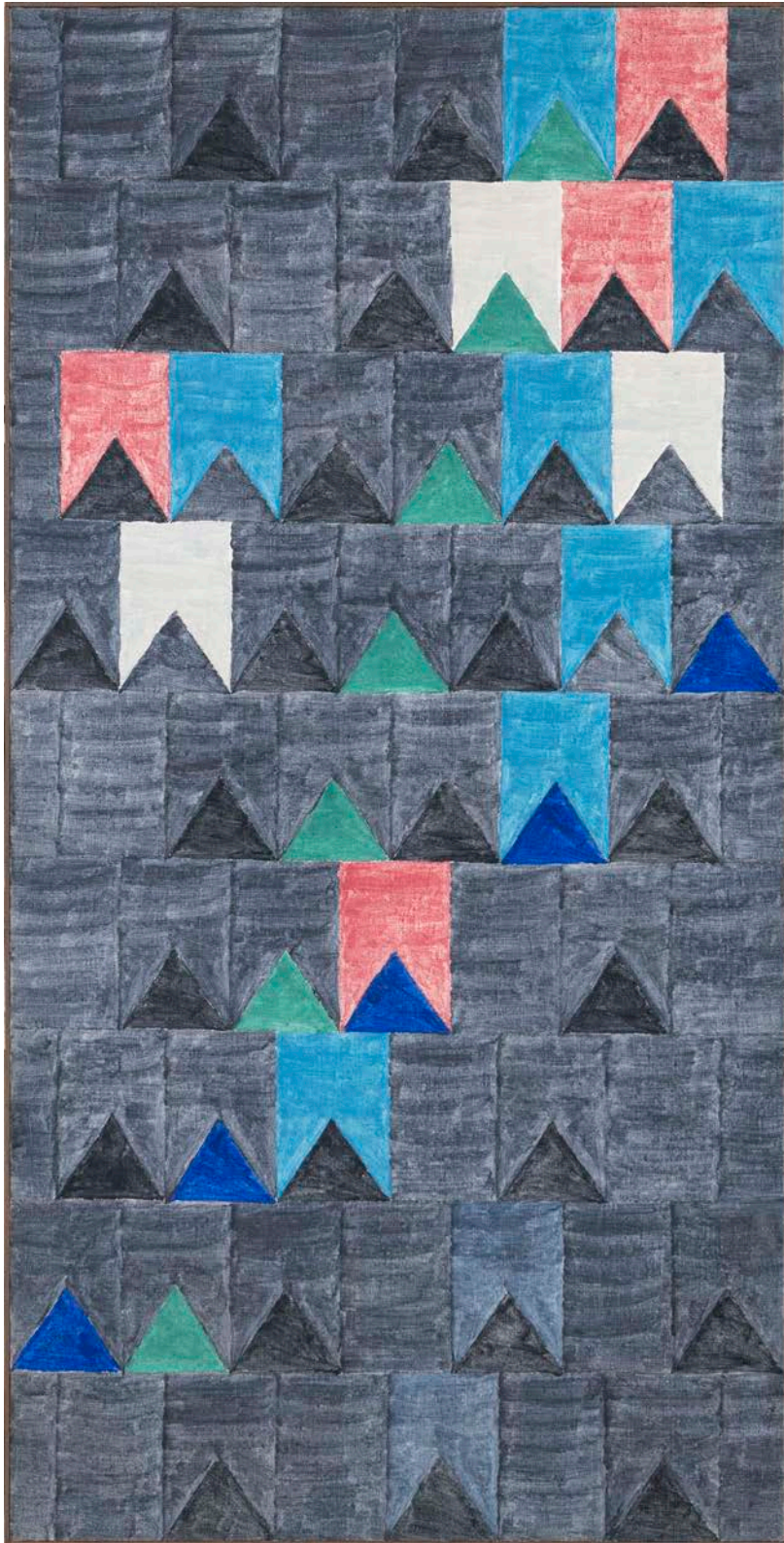








**Alfredo Volpi**  
*Ogiva [Ogive]*, 1970's  
tempera on canvas  
136 x 68 cm [53 1/2 x 26 3/4 in]  
(13353)



**Alfredo Volpi**  
*Untitled, 1970's*  
 tempera on canvas  
 136 x 68 cm [53 1/2 x 26 3/4 in]  
 (13355)





**Raymundo Colares**

*Gibi [Comic Book], n.d.*

Colored paper

45 x 45 x 1 cm [17 3/4 x 17 3/4 x 3/8 in]

(7643)



Almeida & Dale

Rua Caconde, 152  
01425-010 | São Paulo SP  
almeidaedale.com.br  
+55 11 3882-7120